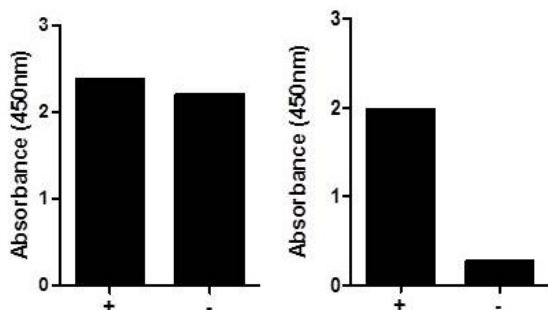


c-Jun (Total/Phospho) InstantOne ELISA™ Kit

Catalog Number: 85-86163

Also known as: Transcription factor AP-1

RUO: For Research Use Only. Not for use in diagnostic procedures.



NIH-3T3 cells were either untreated (-) or treated with anisomycin (500ng/mL for 30 min) (+). Cell lysates were prepared as described in the InstantOne ELISA™ User Manual. Using the c-Jun (Total/Phospho) InstantOne ELISA™, the cell lysates were analyzed for levels of Total c-Jun (left) and phospho-c-Jun (Ser73) (right).

Product Information

Contents: c-Jun (Total/Phospho) InstantOne ELISA™

Catalog Number: 85-86163

Clone: ELISA



Temperature Limitation: Store at 2-8°C.

Batch Code: Refer to vial

Use By: Refer to vial

Description

The InstantOne ELISA™ is specifically engineered for accurate measurement of total and phosphorylated human and mouse c-Jun (Ser73) in cell lysates. Detection of rat c-Jun is also expected. The InstantOne ELISA™ kit allows for fast analysis of samples in approximately one hour. All reagents used in a traditional sandwich ELISA are added in solution to a plate followed by a wash step and detection with the TMB colorimetric substrate.

Jun is a member of the Activator Protein-1 (AP-1) family of transcription factors. AP-1 proteins can form homodimers (e.g., Jun/Jun) or heterodimers with other family members (e.g., Jun/Fos). AP-1 activity is highly regulated in normal cells by phosphorylation in response to growth factors, cytokines, and various other intra- and extracellular signals. Jun is phosphorylated at Ser63 and Ser73 by JNK, resulting in the ability of Jun/Jun or Jun/Fos dimers to bind DNA and modulate transcription.

Components

This (Total/Phospho) kit includes sufficient reagents to perform 48 wells of the total and 48 wells of the phospho-specific detection for a total of 96 wells.

User Manual

c-Jun (Total) Capture Antibody Reagent (Part No. IOJUNCAR1M) - 1 x 1.5 mL
c-Jun (Total) Detection Antibody Reagent (Part No. IOJUNDAR1M) - 1 x 1.5 mL
phospho-c-Jun (Ser73) Capture Antibody Reagent (Part No. IOPJUNCAR1M) - 1 x 1.5 mL
phospho-c-Jun (Ser73) Detection Antibody Reagent (Part No. IOPJUNDAR1M) - 1 x 1.5 mL
InstantOne™ Assay Plate (Part No. IOAP96) - 96 well (sealed)
Cell Lysis Buffer (5X) (Part No. IOCLB1) - 10 mL
Enhancer Solution (Part No. IOES1) - 1 mL
Wash Buffer (10X) (Part No. IOWB1) - 15 mL
Detection Reagent (TMB Substrate) (Part No. IODR1) - 12 mL
Stop Solution (Part No. IOSS1) - 12 mL
Positive Control Cell Lysate (lyophilized) (Part No. IOJUNPC1) - 0.25 mL
Plate seal - 1 ea

Applications Reported

This ELISA antibody has been reported for use in ELISA.

Not for further distribution without written consent. Copyright © 2017 Thermo Fisher Scientific Inc. All rights reserved. All trademarks are property of Thermo Fisher Scientific and its subsidiaries unless otherwise specified. Tel: 1 800 9556288 • thermofisher.com/askaquestion • thermofisher.com/support

c-Jun (Total/Phospho) InstantOne ELISA™ Kit

Catalog Number: 85-86163

Also known as: Transcription factor AP-1

RUO: For Research Use Only. Not for use in diagnostic procedures.

Applications Tested

This assay has been validated for the detection of total and phosphorylated human c-Jun (Ser73) in anisomycin-treated NIH-3T3 cell lysates. This assay was evaluated for specificity by immunoblot analysis using the same lysates and antibody (data shown above).

Related Products

85-86161 c-Jun (Total) InstantOne ELISA™

85-86162 phospho-c-Jun (Ser73) InstantOne ELISA™

IOCLB InstantOne ELISA Cell Lysis Buffer (5X) – 100 mL

IOES InstantOne ELISA Enhancer Solution – 100 mL