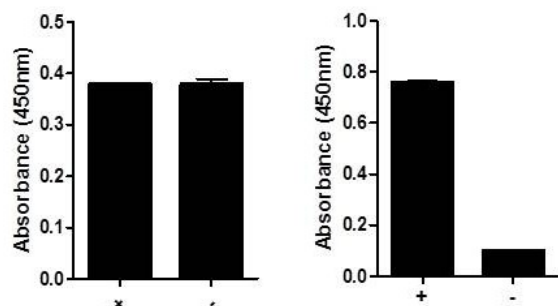


GSK3 beta (Total/Phospho) InstantOne ELISA™ Kit

Catalog Number: 85-86173

Also known as: Glycogen synthase kinase-3 beta

RUO: For Research Use Only. Not for use in diagnostic procedures.



MCF7 cells were treated with either the PI3 Kinase inhibitor Wortmannin (10uM) (-) or insulin (10ng/mL for 10 min.) (+). Cell lysates were prepared as described in the InstantOne ELISA™ User Manual. Using the GSK3 beta (Total/Phospho) InstantOne ELISA™, the cell lysates were analyzed for levels of Total GSK3 beta (left) and phospho-GSK3 beta (Ser9) (right).

Product Information

Contents: GSK3 beta (Total/Phospho) InstantOne ELISA™



Catalog Number: 85-86173

Clone: ELISA



Temperature Limitation: Store at 2-8°C.

Batch Code: Refer to vial

Use By: Refer to vial

Description

The InstantOne ELISA™ is specifically engineered for accurate measurement of total and phosphorylated human and mouse GSK3b (Ser9) in cell lysates. Detection of total and phosphorylated rat GSK3b (Ser9) is also expected. The InstantOne ELISA™ kit allows for fast analysis of samples in approximately one hour. All reagents used in a traditional sandwich ELISA are added in solution to a plate followed by a wash step and detection with the TMB colorimetric substrate.

Glycogen Synthase Kinase 3 (GSK3) is a Ser/Thr kinase that exists as two isoforms, GSK3a and GSK3b. Unlike other kinases, phosphorylation at Ser9 and Ser21 for GSK3a and GSK3b, respectively, leads to inactivation of this enzyme. GSK3 has been implicated in several diseases, including cancer and diabetes, through its phosphorylation of glycogen synthase. GSK3 has also been associated with neurodegenerative diseases such as Alzheimer's disease due to its phosphorylation of the neuronal Tau protein.

Components

This (Total/Phospho) kit includes sufficient reagents to perform 48 wells of the total and 48 wells of the phospho-specific detection for a total of 96 wells.

User Manual

GSK3b (Total) Capture Antibody Reagent (Part No. IOGSKCAR1M) - 1 x 1.5 mL
 GSK3b (Total) Detection Antibody Reagent (Part No. IOGSKDAR1M) - 1 x 1.5 mL
 phospho-GSK3b (Ser9) Capture Antibody Reagent (Part No. IOPGSKCAR1M) - 1 x 1.5 mL
 phospho-GSK3b (Ser9) Detection Antibody Reagent (Part No. IOPGSKDAR1M) - 1 x 1.5 mL
 InstantOne™ Assay Plate (Part No. IOAP96) - 96 well (sealed)
 Cell Lysis Buffer (5X) (Part No. IOCLB1) - 10 mL
 Enhancer Solution (Part No. IOES1) - 1 mL
 Wash Buffer (10X) (Part No. IOWB1) - 15 mL
 Detection Reagent (TMB Substrate) (Part No. IODR1) - 12 mL
 Stop Solution (Part No. IOSS1) - 12 mL
 Positive Control Cell Lysate (lyophilized) (Part No. IOGSKPC1) - 0.25 mL
 Plate seal - 1 ea

Applications Reported

This ELISA antibody has been reported for use in ELISA.

Not for further distribution without written consent. Copyright © 2017 Thermo Fisher Scientific Inc. All rights reserved. All trademarks are property of Thermo Fisher Scientific and its subsidiaries unless otherwise specified. Tel: 1 800 9556288 • thermofisher.com/askaquestion • thermofisher.com/support

GSK3 beta (Total/Phospho) InstantOne ELISA™ Kit

Catalog Number: 85-86173

Also known as: Glycogen synthase kinase-3 beta

RUO: For Research Use Only. Not for use in diagnostic procedures.

Applications Tested

This assay has been validated for the detection of total human GSK3b in stimulated MCF7 cell lysates (data shown above).

Related Products

85-86171 GSK3 beta (Total) InstantOne ELISA™

85-86172 phospho-GSK3 beta (Ser9) InstantOne ELISA™

IOCLB InstantOne ELISA Cell Lysis Buffer (5X) – 100 mL

IOES InstantOne ELISA Enhancer Solution – 100 mL

IOWB InstantOne ELISA Wash Buffer (10X) – 500 mL