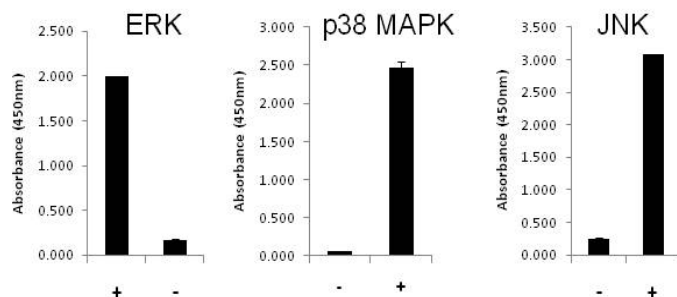


## MAPK Family (ERK, p38, JNK) Activation InstantOne ELISA™ Kit

Catalog Number: 85-86195

Also known as: N/A

RUO: For Research Use Only. Not for use in diagnostic procedures.



Left: A431 cells were pre-treated with 10  $\mu$ M AG1478 (an EGFR kinase inhibitor) for 3 hours (-) or treated with 10 ng/mL EGF for 10 min (+). Cells were analyzed for phosphorylated ERK 1/2 by InstantOne ELISA™. Middle and Right: HEK293 cells untreated (-) or treated with 2  $\mu$ g/mL anisomycin for 30 min (+). Cells were analyzed for phosphorylated p38 MAPK (middle) or phosphorylated JNK1/2 (right) by InstantOne ELISA™.

### Product Information

**Contents:** MAPK Family (ERK, p38, JNK)  
Activation InstantOne ELISA™



**Catalog Number:** 85-86195



**Temperature Limitation:** Store at 2-8°C.



**Batch Code:** Refer to vial



**Use By:** Refer to vial

### Description

The InstantOne ELISA™ is specifically engineered for accurate measurement of phosphorylated ERK 1/2 (human, mouse, hamster), p38 MAPK (human, mouse), and JNK 1/2 (human, mouse) in cell lysates. Detection of these phosphorylated molecules in rat is also expected. The InstantOne ELISA™ kit allows for fast analysis of samples in approximately one hour. All reagents used in a traditional sandwich ELISA are added in solution to a plate followed by a wash step and detection with the TMB colorimetric substrate.

Extracellular signal-regulated kinase (ERK), p38, and Jun N-terminal Kinases (JNKs) are members of the Mitogen-Activated Protein Kinase (MAPK) pathway. These kinases are activated via phosphorylation of the TxY motif in response to growth factors, cellular and environmental stress, and cytokines. These kinases play roles in a variety of biological processes, including cell division, survival, differentiation, and metabolism.

This kit has been developed to recognize the following phosphorylation sites:

ERK 1/2 (Thr202/Tyr204, Thr185/Tyr187)

p38 MAPK (Thr180/Tyr182)

JNK 1/2 (Thr183/Tyr185)

### Components

User Manual

phospho-ERK 1/2 (Thr202/Tyr204, Thr182/Tyr187) Capture Antibody Reagent (Part No. IOPERKCAR1T) – 1 mL  
phospho-ERK 1/2 (Thr202/Tyr204, Thr182/Tyr187) Detection Antibody Reagent (Part No. IOPERKDAR1T) – 1 mL  
phospho-p38 MAPK (Thr180/Tyr182) Capture Antibody Reagent (Part No. IOPP38CAR1T) – 1 mL  
phospho-p38 MAPK (Thr180/Tyr182) Detection Antibody Reagent (Part No. IOPP38DAR1T) – 1 mL  
phospho-JNK 1/2 (Thr183/Tyr185) Capture Antibody Reagent (Part No. IOPJNKBCAR1T) – 1 mL  
phospho-JNK 1/2 (Thr183/Tyr185) Detection Antibody Reagent (Part No. IOPJNKBDAR1T) – 1 mL  
InstantOne™ Assay Plate (Part No. IOAP96) - 96 well (sealed)  
Cell Lysis Buffer (5X) (Part No. IOCLB1) - 12 mL  
Enhancer Solution (Part No. IOES1) - 1 mL  
Wash Buffer (10X) (Part No. IOWB1) - 15 mL  
Detection Reagent (TMB Substrate) (Part No. IODR1) - 12 mL  
Stop Solution (Part No. IOSS1) - 12 mL  
Positive Control Cell Lysate lyophilized (Part No. IOMAPKPC1) - 0.25 mL

Not for further distribution without written consent. Copyright © 2017 Thermo Fisher Scientific Inc. All rights reserved. All trademarks are property of Thermo Fisher Scientific and its subsidiaries unless otherwise specified. Tel: 1 800 9556288 • [thermofisher.com/askaquestion](http://thermofisher.com/askaquestion) • [thermofisher.com/support](http://thermofisher.com/support)

---

## **MAPK Family (ERK, p38, JNK) Activation InstantOne ELISA™ Kit**

**Catalog Number:** 85-86195

**Also known as:** N/A

**RUO: For Research Use Only. Not for use in diagnostic procedures.**

---

Plate seal – 1 ea

### **Applications Tested**

This assay has been validated for the detection of phosphorylated human ERK 1/2 in stimulated A431 cell lysates. In addition, this kit has been validated for the detection of phosphorylated human p38 MAPK and JNK 1/2 in stimulated HEK293 cell lysates. This assay was evaluated for specificity by immunoblot analysis using the same lysates and antibody.

### **Related Products**

85-86011 ERK 1/2 (Total) InstantOne ELISA™

85-86012 phospho-ERK 1/2 (Thr202/Tyr204, Thr185/Tyr187) InstantOne ELISA™

85-86022 phospho-p38 MAPK (Thr180/Tyr182) InstantOne ELISA™

85-86196 JNK 1/2 (Total) InstantOne ELISA™

85-86197 phospho-JNK 1/2 (Thr183/Tyr185) InstantOne ELISA™

IOCLB InstantOne ELISA Cell Lysis Buffer (5X) - 100mL

IOES InstantOne ELISA Enhancer Solution – 100mL

IOWB InstantOne ELISA Wash Buffer(10X) – 500mL