

Certificate of Analysis - Certified Reference Material

Thermo Scientific™ Trademark™  
Product Number R4609385  
Product Name K. pneumoniae ATCC BAA-1706 PK/5  
Lot Number 179377  
Usage Decision Accepted (OK)  
Expiration Date 2026-04-10

This product has been manufactured, processed and packaged in accordance with Quality Systems Regulation, 21 CFR Part 820. The results were derived from a representative sample of the batch and were obtained at the time of release. Refer to the enclosed product insert for instructions, intended use, hazard/safety requirements, and storage conditions.

Product Char Results	
Purity	Demonstrates pure growth on applicable media
Viability	Recovered at acceptable level within test period
Passage	3 (Current preserved state)

Microbiological testing	Results	Specification
>85% Identification on Vitek 2C GN		85 - 100
>95% Identification on MicroSEQ	100	95 - 100
Microscopic Features	Pass	

These tests are performed in accordance with ISO 17025 guidelines. Thermo Fisher Scientific has determined each loop of this reference material to be sufficiently homogeneous for its intended use. Individual products are traceable to a recognized culture collection. Although the Vitek(TM) panel uses many conventional tests, the unique environment of the card, combined with the short incubation period, may produce results that differ from published results obtained by other methods

Signed



Dawn Baker  
QA Manager

The identity, purity, and authenticity of the Licensed Products are exclusively the responsibility of Remel Inc. and not ATCC. The ATCC Licensed Derivative Emblem, the ATCC Licensed Derivative Word mark, and the ATCC Catalog Marks are trademarks of ATCC.

Remel Inc. is licensed to use these trademarks and to sell products derived from ATCC® culture.



CERT #6559.01

Thermo Fisher Scientific is accredited by A2LA as a registered reference material producer certificate number 6559.01 in accordance with ISO 17034[1].

[1] ISO 17034 First Edition 2016-11-01 General requirements for the competence of reference material producers

Version 1.0

# MicroSEQ ID Report



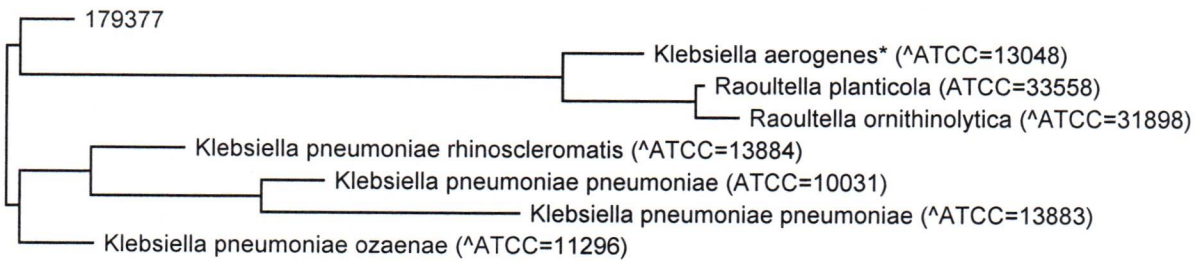
Generated at: 21 Oct 2024 at 07:21:50 CDT

179377

Specimen Entries			
Entry Name	150	410	442
179377	Y	C	G
Klebsiella pneumoniae ozaenae (^ATCC=11296) 99.77	C	Y	K

Specimen : 179377

= 0.2557%



Project Creator: MGonzalez: Maria Bergman-Gonzalez

Printed by: BYokum:Bri Yokum